

Discover

Shimer Square

MOUNT CARROLL, ILLINOIS

www.ShimerSquare.com

| (309) 794-6711

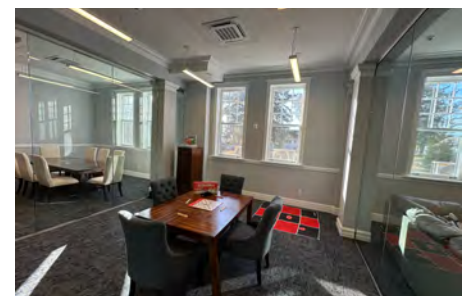
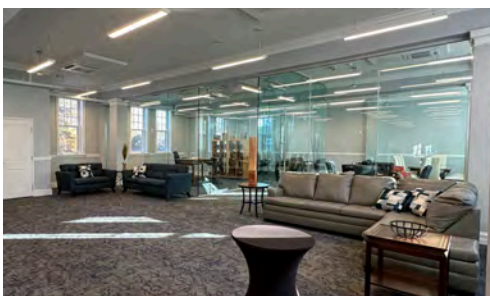
| info@shimersquare.com

Welcome to Shimer Square

Shimer Square is a historic, transformative redevelopment, bringing new life to the historic Shimer College campus in Mount Carroll, Illinois. Today, Shimer Square offers 51 new units of housing offering a range of studio, 1-Bedroom, 2-Bedroom, and 3-Bedroom apartments within Hostetter, McKee, and Dezendorf Halls. A brand new childcare center, Honey Bee Child Development Center, operated by 4-C Community Coordinated Child Care, is in the process of opening once they receive their DCFS licensing approval. A historically rehabilitated Resource Center inside the historic Sawyer House offers property management and resident services, co-work space, HUD-approved housing counseling services, and CDFI loan programs. Next up, a mobile coffee unit in 2026, and future investment in Howe Hall, Campbell Library, and Tolman Hall in 2027 will expand small businesses and offer coffee, cafe and collective, and a microbrewery and lodging. Shimer Square is now a welcoming place where people can live, work, and flourish. From the 1850s to today, Shimer Square honors the vision, grit, and perseverance of those who built this campus. Our team and partners carry forward that same spirit, preserving these historic buildings while reimagining them for a strong and thriving future. Follow our progress at ShimerSquare.com.



Community Space for all Shimer Square Apartments residents inside McKee Hall



McKee Hall



MCKEE HALL

Built in 1906, McKee Hall was originally designed as a dormitory with a dining hall and kitchen. Renovated in 1938, the building was named in honor of William Parker McKee, who served as Dean of Shimer College from 1897 to 1930 following the retirement of Francis Wood Shimer. Today, McKee Hall has been historically preserved and adaptively reused into studio, one-bedroom, and two-bedroom apartments, 17 in total, are thoughtfully preserved featuring original, restored windows, hardwood flooring, and hallways. The majority of the former dining hall now serves as a large resident community space, while the original kitchen has been converted into apartments with individual entrances. The original "William Parker McKee Hall" inscription carved in limestone has been fully restored. McKee Hall is conjoined to Hostetter Hall through the annex, has also been redeveloped into units with unique floor plans and individual entrances.

203 E. Seminary St., Bldg. D
Units M101-404
Mount Carroll, IL

PROPERTY FEATURES



Studio, 1-Bedroom, & 2-Bedrooms



In Unit Washer & Dryers

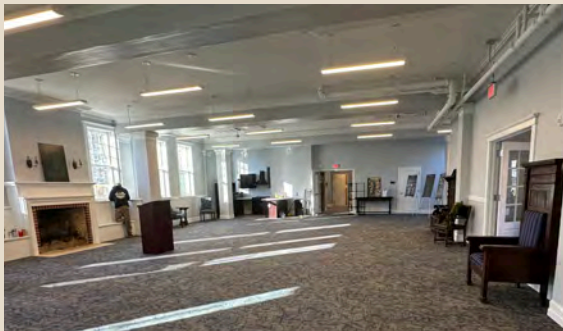


502-765 sq. ft.

Rent Range

\$430-948/mo

Scan to Apply



APARTMENTS MANAGED BY
YOST MANAGEMENT SERVICES



yms-rentals.com/properties/shimer-square



(217) 345-2414



Hostetter Hall



HOSTETTER HALL

Hostetter Hall, originally called 'West Hall,' was constructed in 1906 as a dormitory with a dining hall and meeting rooms. It was named for Miss A. Beth Hostetter, a Shimer College graduate who served in multiple roles including instructor, Acting Dean, interim President, Dean of Students, and Registrar. Today, Hostetter Hall has been historically preserved and adaptively reused into studio, one-bedroom, and two-bedroom apartments, 16 in total, all featuring original, restored windows, hardwood flooring, and historic hallways.

203 E. Seminary St. Bldg. D
Units H101-404
Mount Carroll, IL

PROPERTY FEATURES



Studio, 1-Bedroom,
& 2 Bedrooms



In Unit Washer &
Dryers



462-656 sq. ft.

Rent Range

\$430-948/MO

Scan to Apply



Dezendorf Hall



DEZENDORF HALL

Built in the 1950s as a Shimer College dormitory, Dezendorf Hall housed generations of students. Named after Nelson Dezendorf, a General Motors executive and chairman of the college's board, Dezendorf was instrumental in helping the college raise funds during a financial crisis in the late 1950s. Today, it has been reimagined into 18 apartments featuring one- and three-bedroom units, while retaining much of its original historic character. Each unit includes an outdoor balcony or walk-out patio.

203 E. Seminary St. Bldg. F
Units DL01-D305
Mount Carroll, IL

PROPERTY FEATURES



1-Bedroom &
3-Bedrooms



In-Unit Washer
& Dryers



557-1087 sq. ft.

Rent Range

\$430-948/MO

Scan to Apply



Resource Center



RESOURCE CENTER

The Sawyer House is now a Resource Center and houses the property manager's office and also serve as a community hub offering resident support, business resources, co-work space, and free, HUD-approved housing counseling services to promote homeownership, financial literacy, and foreclosure prevention. The Resource Center will also connect entrepreneurs to small business financing through Bridge Investment Community Development Corporation, a certified Community Development Financial Institution (CDFI), advancing small business growth at Shimer Square, with potential for additional service-based businesses to open inside the Resource Center in the future. Hours are by appointment.

**203 E. Seminary St., Bldg. A
Mount Carroll, IL**

SERVICES

**PROPERTY
MANAGEMENT**
for apartment
residents


**CO-WORK
SPACE**
for apartment
residents &
childcare
families

**HUD-APPROVED
HOUSING
COUNSELING**
for Carroll
County residents

**LOAN
PROGRAMS FOR
SMALL
BUSINESSES**

HOURS BY APPOINTMENT

 ShimerSquare.com

 (309) 794-6711


Honey Bee Child Development Center



HONEY BEE CHILD DEVELOPMENT CENTER

Initiated in 2022 and construction completed in 2025, the Honey Bee Child Development Center was named by 4-C Community Coordinated Child Care, a non-profit child care resource provider. For the first time, 4-C will directly operate its own childcare facility, launching a new pilot division to deliver high-quality care and further its mission to support children's development. New positions are being hired, and enrollment will begin once 4-C receives licensing from the Illinois DCFS, anticipated by winter 2025 or around. After approval, 4-C will announce enrollment timelines and begin accepting children. The center will accommodate 60+ children, with expansion efforts in mind for the future.

**205 E. Seminary St.
Mount Carroll, IL**

 <https://www.four-c.org/honey-bee-child-development-center/>

Workforce
Development

Increased Child
Care Access


60+ childcare
slots 0-5 years,
with expansion
in mind

Opening once
DCFS and Fire
Marshall
approval

Scan to Learn
More:



**CENTER OPERATED BY:
4-C COMMUNITY COORDINATED CHILD CARE**

 (800) 848-8727

Looking Ahead

Just as it took many hands to bring this campus to life, it will continue to take many hands as we carry this revitalization into the future.

In 2026, a new mobile coffee unit will join the campus-owned by a local small business and serving uniquely roasted coffees and signature energy drinks by a coffee expert.

Looking ahead to 2027, letters of intent have already been signed by small, locally owned businesses. From coffee and café collectives to microbreweries, wellness services, and artist-inspired ventures, these enterprises will bring new businesses to the campus and create a community-centered destination for all.

Today and throughout 2026, GROWTH, as a 501c3 not-for-profit, is working to raise \$12.5 million to fuel this next phase of expansion. It will once again take the hands of many to bring this vision to life.

Together, we will continue to advance historic preservation, mixed-use development, artist-inspired spaces, and opportunities for small businesses—building a campus that is both historic and resilient, designed to serve generations to come.

CONTACT:

(309) 794-6711

info@shimersquare.com

www.ShimerSquare.com



**CAMPBELL LIBRARY:
CAFE & COLLECTIVE**



**TOLMAN HALL:
COFFEE SHOP & ROASTERY**



**HOWE HALL:
MICROBREWERY &
LODGING**

